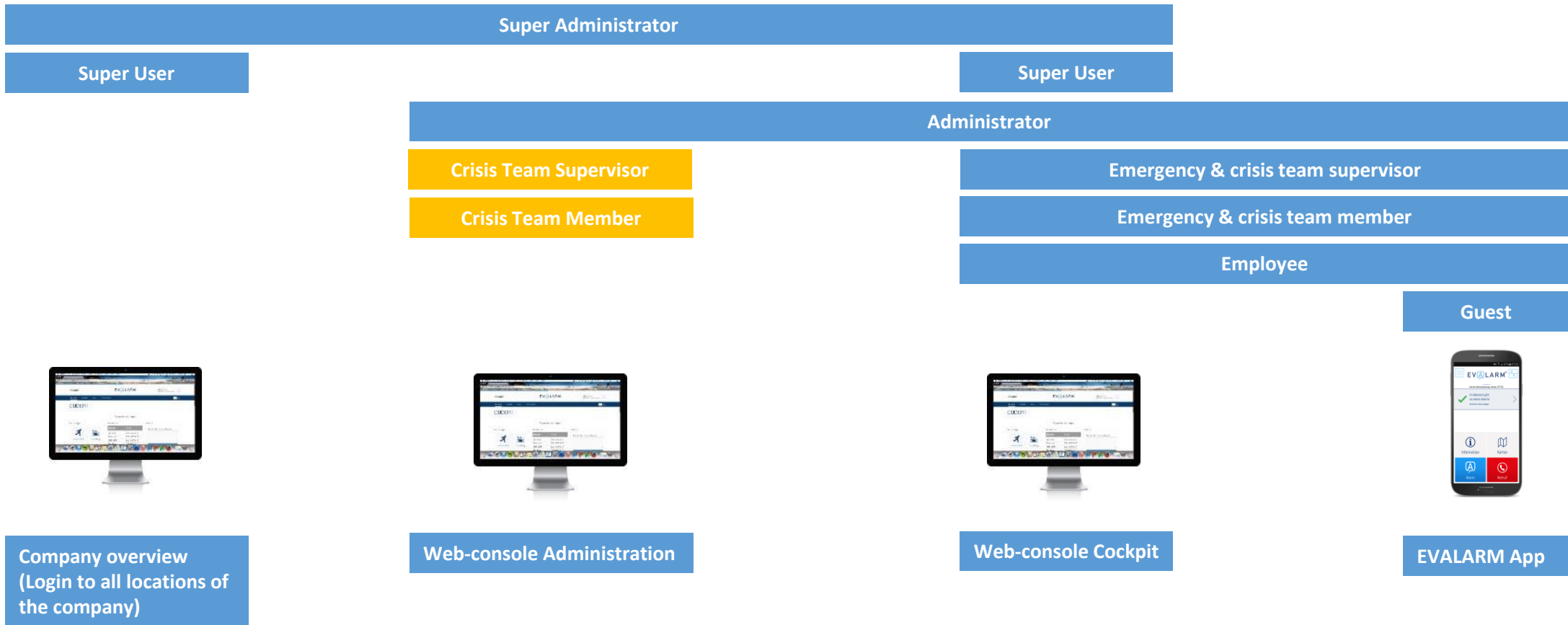


# Access Permissions to EVALARM Clients



Company overview  
(Login to all locations of the company)

Web-console Administration

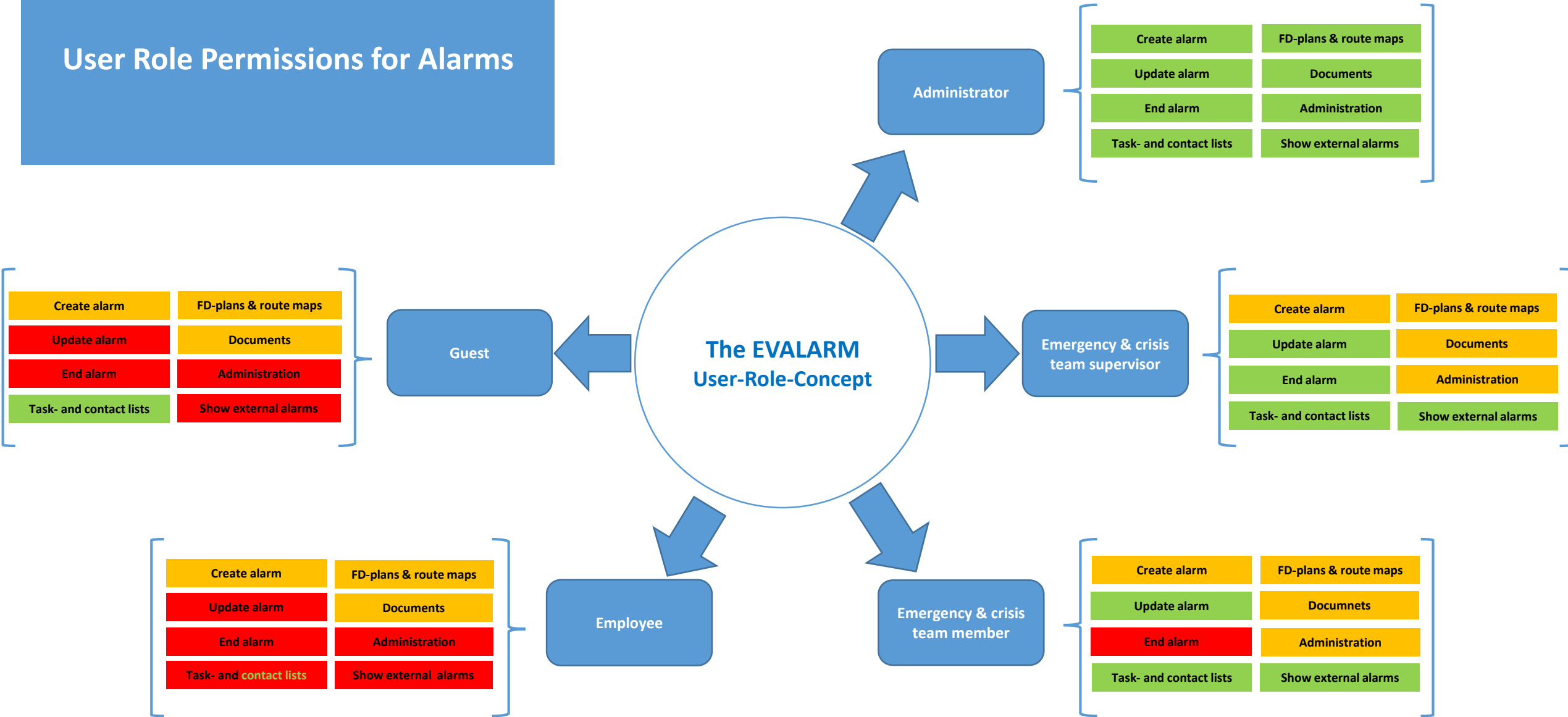
Web-console Cockpit

EVALARM App

= authorized

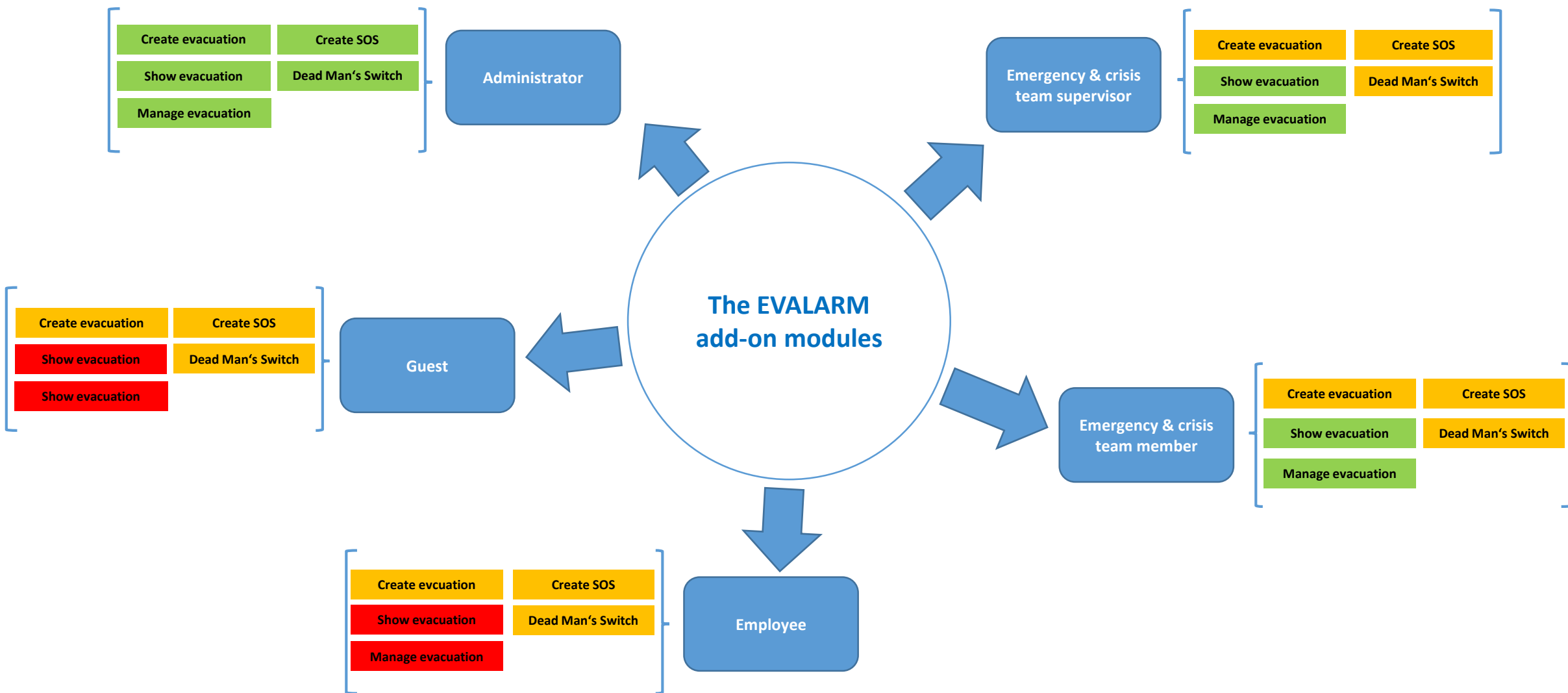
= can be configured

# User Role Permissions for Alarms



■ = authorized   
 ■ = not authorized   
 ■ = can be configured

# User Role Permissions for Additional Modules SOS\*, Mobile Evacuation\* & Dead Man's Switch\*



■ = authorized   
 ■ = not authorized   
 ■ = can be configured

\*this feature requires an additional license

# Summary

✓ = authorized

✗ = not authorized

★ = can be configured

\*this feature requires an additional license

	Super Administrator	Super User	Administrator	Emergency & crisis team supervisor	Emergency & crisis team member	Employee	Guest
Company overview	✓	✓	✗	✗	✗	✗	✗
Use of EVALARM App	✗	✗	✓	✓	✓	✓	✓
Web console - Cockpit	✓	✓	✓	✓	✓	✓	✗
Web console - Administration	✓	✗	✓	★	★	✗	✗
Create alarm/information	✓	✓	✓	★	★	★	★
Update alarm	✓	✓	✓	✓	✓	✗	✗
End alarm	✓	✓	✓	✓	✗	✗	✗
Receive push-notification (App)	✗	✗	✓	✓	✓	✓	✓
Receive E-Mail	✗	✗	✓	✓	✓	✓	✓
Show alarm archive (App)	✗	✗	✓	✓	✓	✓	✓
Show external alarms	✓	✓	✓	✓	✓	✗	✗
Update external alarms	✗	✗	✗	✗	✗	✗	✗
Show contact lists	✓	✓	✓	✓	✓	✓	✓
Show task lists	✓	✓	✓	✓	✓	✗	✗
Show FD-plan	✓	✓	✓	★	★	★	★
Show route maps	✓	✓	✓	★	★	★	★
Create SOS*	✓	✓	✓	★	★	★	★
Create mobile evacuation*	✓	✓	✓	★	★	★	★
Show mobile evacuation*	✓	✓	✓	✓	✓	✗	✗
Manage mobile evacuation*	✓	✓	✓	✓	✓	✗	✗
Dead Man's Switch*	✓	✓	✓	★	★	★	★